

MALAYSIA

PHONE: 6-03-8529 1318
FAX: 6-03-8529 1310
Email ais@caam.gov.my
URL: aip.caam.gov.my

CIVIL AVIATION AUTHORITY OF MALAYSIA
AERONAUTICAL INFORMATION SERVICES
LEVEL 2, WEST WING TERMINAL NORTH
JALAN CTA 3
KUALA LUMPUR INTERNATIONAL AIRPORT
64000 KLIA, SEPANG,
SELANGOR DARUL EHSAN

**AIRAC AIP SUP
63/24**
**Effective Date: 26 DEC 2024
to 06 MAY 2025**
Publication Date: 14 NOV 2024

**KOTA BHARU / SULTAN ISMAIL PETRA AIRPORT (WMKC)
UPGRADING WORKS**

(This AIRAC AIP Supplement replaces AIRAC AIP Supplement 35/2024)

1 INTRODUCTION

- 1.1 The following temporary changes concerning Kota Bharu Aerodrome (WMKC) will take place due to upgrading works from 30th April 2024 until 6th May 2025 EST. Upgrading works will be divided into 2 Phases. Phase 2A will take place from 30th April 2024 until 13th December 2024 EST. Phase 2B will take place from 13th December 2024 until 6th May 2025 EST.
- 1.2 During Phase 2, new Bay 6, Bay 7, Bay 8, Bay 9, Bay 10 and Bay 11/Bay 11A have been activated as permanent aircraft stands. Bay 1, Bay 2, Bay 3, Bay 4 and Bay 5 are closed for upgrading works.
- 1.3 During Phase 2A and Phase 2B, new Taxiway E (Extension), Apron Taxiway J, Taxiway L and Taxiway L1 have been activated as permanent taxiways. During Phase 2A, Taxiway A and Taxiway C will be closed for upgrading works and during Phase 2B, Taxiway B will be closed for upgrading works. Details of the taxiway closure will be mentioned in the remarks.

WMKC AD 2.8 APRONS, TAXIWAYS AND CHECK LOCATION/POSITIONS DATA

1	Apron surface and strength	BAY 6, BAY 7, BAY 8, BAY 9, BAY 10, BAY 11, and BAY 11A Surface: Concrete (Rigid) Strength: PCR 660/R/B/W/T
2	Taxiway width, surface and strength	TWY A Width: 25 M Surface: Asphalt (Flexible) Strength: PCR 520/F/D/X/U TWY A1 Width: 18 M Surface: Asphalt (Flexible) Strength: PCR 520/F/D/X/U TWY B Width: 26 M Surface: Asphalt (Flexible) Strength: PCR 520/F/D/X/U TWY C Width: 18 M Surface: Asphalt (Flexible) Strength: PCR 520/F/D/X/U TWY D Width: 17 M Surface: Asphalt (Flexible) Strength: PCR 520/F/D/X/U

		<p>TWY E Width: 18 M Surface: Asphalt (Flexible) Strength: PCR520/F/D/X/U</p> <p>TWY E (EXT.) Width: 18 M Surface: Asphalt (Flexible) Strength: PCR650/F/B/X/T</p> <p>TWY F Width: 14 M Surface: Asphalt (Flexible) Strength: 8.3Tonnes</p> <p>TWY G Width: 21 M Surface: Asphalt (Flexible) Strength: PCR520/F/D/X/U</p> <p>TWY H Width: 13 M Surface: Asphalt (Flexible) Strength: 8.3 Tonnes</p> <p>TWY L & L1 Width: 18 M Surface: Asphalt (Flexible) Strength: PCR650/F/B/X/T</p> <p>APRON TAXIWAY J Width: 18 M Surface: Concrete (Rigid) Strength: PCR660/R/B/W/T</p>
5	Remarks	<p>PHASE 2A APRON BAY 1, 2, 3, 4, 5 U/S FM 20240430 TIL 20241213 EST NEW APRON BAY 6,7,8, 9, 10, 11/11A FM 20240430 TIL PERM TWY A & A1 U/S FM 20240430 TIL 20241213 EST TWY C U/S FM 20240430 TIL 20241213 EST</p> <p>PHASE 2B APRON BAY 1, 2, 3, 4, 5 U/S FM 20241213 TIL 20250506 EST NEW APRON BAY 6,7,8, 9, 10, 11/11A FM 20240430 TIL PERM TWY B & B1 U/S FM 20241213 TIL 20250506 EST TWY E (FM TWY B TO TWY C) U/S FM 20241213 TIL 20250506 EST</p> <p>Isolated Aircraft Parking Position (IAPP) IAPP is located at Taxiway E near Runway 28 Threshold.</p>

WMKC AD 2.9 SURFACE MOVEMENT GUIDANCE AND CONTROL SYSTEM AND MARKINGS

4	Remarks	<p>TWY LGT TWY C U/S FM 20240430 TIL 20241213 EST Visual docking and guidance system for Bay 1, 2 & 3 U/S FM 20240430 TIL 20250506 EST New visual docking and guidance system for Bay 6, 7 & 8 FM 20240430 TIL PERM</p>
---	---------	---

WMKC AD 2.10 AERODOME OBSTACLES (ADDITIONAL)

<i>In Area 3</i>					
<i>OBST ID/ Designation</i>	<i>OBST type</i>	<i>OBST position</i>	<i>ELEV/HGT</i>	<i>Markings/ Type, colour</i>	<i>Remarks</i>
a	b	c	d	e	f
TC-4	Tower crane	061011.4N 1021732.6E	5 M / 45 M	MARKED / LIM R	Crane jib reach 66 M Obstacle in position FM 20240116 TIL 20260115 EST
TC-5	Tower crane	061012.1N 1021736.6E	5 M / 38 M	MARKED / LIL R	Crane jib reach 65 M Obstacle in position FM 20240116 TIL 20260115 EST
TC-6	Tower crane	061010.5N 1021734.6E	5 M / 36 M	MARKED / LIL R	Crane jib reach 56 M Obstacle in position FM 20240116 TIL 20260115 EST
TC-7	Tower crane	061008.2N 1021739.7E	5 M / 36 M	MARKED / LIL R	Crane jib reach 50 M Obstacle in position FM 20240116 TIL 20260115 EST

WMKC AD 2.15 OTHER LIGHTING, SECONDARY POWER SUPPLY

3	TWY edge and centre line lighting	<p>PHASE 2A TWY A EDGE & CL LGT U/S FM 20240430 TIL 20241213 EST TWY C EDGE & CL U/S FM 2 FM 20240430 TIL 20241213 EST</p> <p>PHASE 2B TWY B EDGE & CL LGT U/S FM 20241213 TIL 20250506 EST TWY E (FM TWY B TO TWY C) U/S FM 20241213 TIL 20250506 EST</p>
---	-----------------------------------	--

WMKC AD 2.19 RADIO NAVIGATION AND LANDING AIDS

<i>Type of aid, MAG VAR, CAT of ILS/MLS (for VOR/ILS/MLS, give declination)</i>	<i>ID</i>	<i>Frequency</i>	<i>Hours of operation</i>	<i>Position of transmitting antenna coordinates</i>	<i>Elevation of DME transmitting antenna</i>	<i>Remarks</i>
1	2	3	4	5	6	7
VOR/DME	VKB	112.300 MHz	-	060948.4N 1021851.1E	40 FT	-
LOC	-	109.300 MHz	-	060950.9N 1021832.1E	-	Localizer Course Bearing: 279° 37' 20" T/ 279° 49' 55" M
GP/DME	IKB	332.000 MHz CH 30X	-	061000.1N 1021714.6E	-	-

WMKC AD 2.20 LOCAL TRAFIC REGULATIONS (ADDITIONAL)**2.20.1 Taxiing to and from stands**

- 2.20.1.1 No aircraft movement is allowed at closed portions of apron taxiway, aircraft stand taxi lane, parking bays and taxiways.
- 2.20.1.2 The routes to be used by aircraft when taxiing into, on and out of the apron will be specified by ATC. The issuance of taxi route by ATC does not relieve the pilot-in-command of the responsibility to maintain separation with other aircraft on the movement area or to comply with ATC directions intended to regulate aircraft movement.
- 2.20.1.3 Pilots are advised to take note of the precautions on the presence of open excavation, workers, construction materials and construction equipment, particularly when taxiing adjacent to the apron and aircraft bays/stand while works within the cordoned/barricaded areas are in progress.
- 2.20.1.4 During Phase 2, new Bay 6, Bay 7 and Bay 8 shall operate for A20N/A21N, B38M/ B738/ B739 aircraft. New Bay 9 shall operate for A20N/A21N, B38M/B738/B739 and AT75/AT76 aircraft. New Bay 10 and Bay 11 shall operate for AT75/AT76 aircraft. All bays shall be Power-In Push-Back operation. Bay 11A shall operate for B738/B739 and Power-In Power-Out operation.

2. Refer **APPENDIX A: Aerodrome/Heliport Chart-ICAO (Phase 2A)**, **APPENDIX B: Aircraft Parking/Docking Chart-ICAO (Phase 2A)**, **APPENDIX C: Aerodrome Ground Movement Chart-ICAO (Phase 2A)**, **APPENDIX D: Aerodrome/Heliport Chart-ICAO (Phase 2B)**, **APPENDIX E: Aircraft Parking/Docking Chart-ICAO (Phase 2B)**, **APPENDIX F: Aerodrome Ground Movement Chart-ICAO (Phase 2B)** and for additional information.

3 VALIDITY

- 3.1 This AIRAC AIP Supplement supersedes AIRAC AIP Supplement 35/2024 and will remain in force until the works are complete on 6th May 2025 EST. Any updates, changes and cancellation of this AIRAC AIP Supplement will be notified through NOTAM.

- END -

**APPENDIX A
AERODROME/HELIPORT
CHART - ICAO
PHASE 2A (FM 20240430 TIL 20241213 EST)**

06° 10' 04" N
102° 17' 27" E

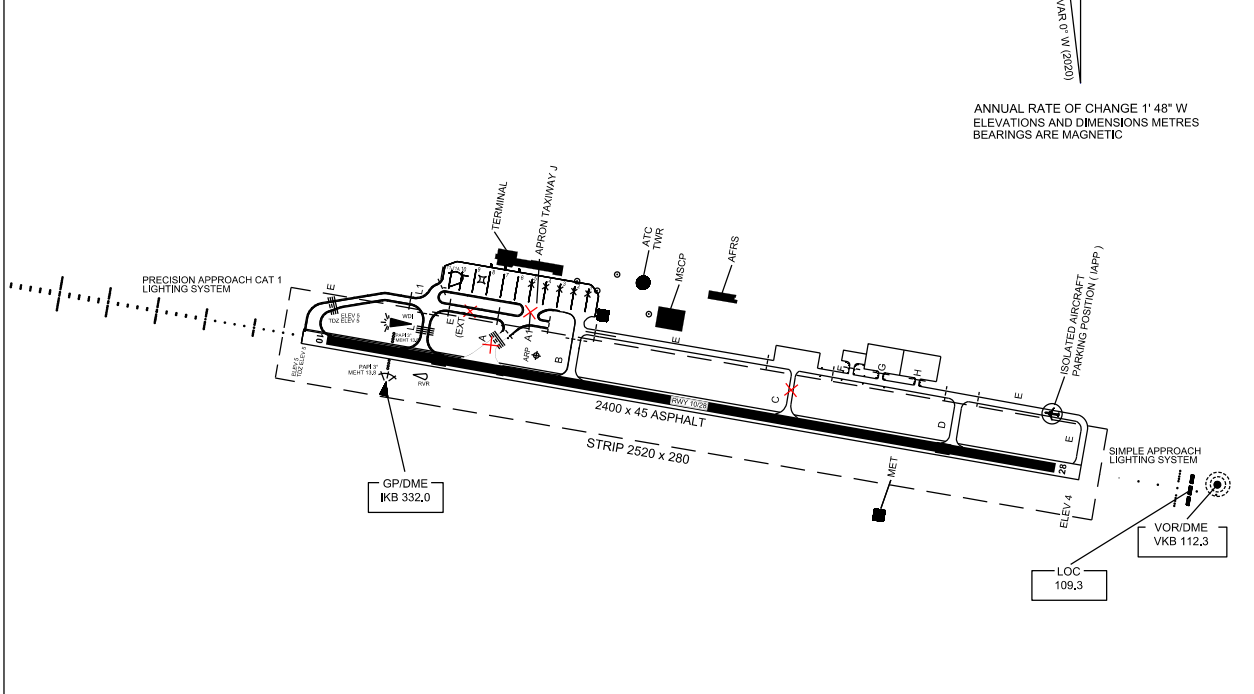
ELEV 5 M

TWR	122.5
SMC	121.6
ATIS	120.85 (P)
	130.3 (S)
ATIS	128.85

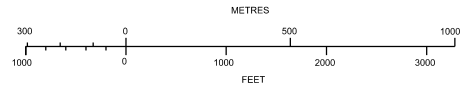
**KOTA BHARU/SULTAN
ISMAL PETRA AIRPORT**

RWY	DIRECTION	THR	BEARING STRENGTH
10	099° T	06° 10' 05.71" N 102° 17' 05.52" E	PCR 520/F/D/X/U ASPHALT
28	279° T	06° 09' 52.61" N 102° 18' 22.48" E	

N
VAR 0° 10' 03" W (2024)
ANNUAL RATE OF CHANGE 1' 48" W
ELEVATIONS AND DIMENSIONS METRES
BEARINGS ARE MAGNETIC



- TAXIWAY A 25 M WIDE
- TAXIWAY B 26 M WIDE
- TAXIWAY C 9 M WIDE
- TAXIWAY D 17 M WIDE
- TAXIWAY E 18 M WIDE
- TAXIWAY F 14 M WIDE
- TAXIWAY G 21 M WIDE
- TAXIWAY H 13 M WIDE
- APRON TAXIWAY A1 22 M WIDE
- BEARING STRENGTH TAXIWAYS A, A1, B, C, D, E, AND G PCR 520/F/D/X/U
- BEARING STRENGTH TAXIWAYS F & H 8.3 TONNES
- BEARING STRENGTH TAXIWAYS L, L1, E (EXT) PCR 650/F/B/X/T
- BEARING STRENGTH APRON TAXIWAY J PCR 660/R/B/W/T
- TAXIWAY EDGE LIGHTS ON A, B, C, D AND E
- TAXIWAY CENTRE LINE LIGHTS ON A, B, D AND E AT CURVES AND EXIT TAXIWAY
- TAXIWAY C FOR LIGHT AIRCRAFT
- APRON TAXIWAY A1 FOR CODE C AIRCRAFT



LEGEND	
CONCRETE STRUCTURE	■
CLOSED MARKING	⊗

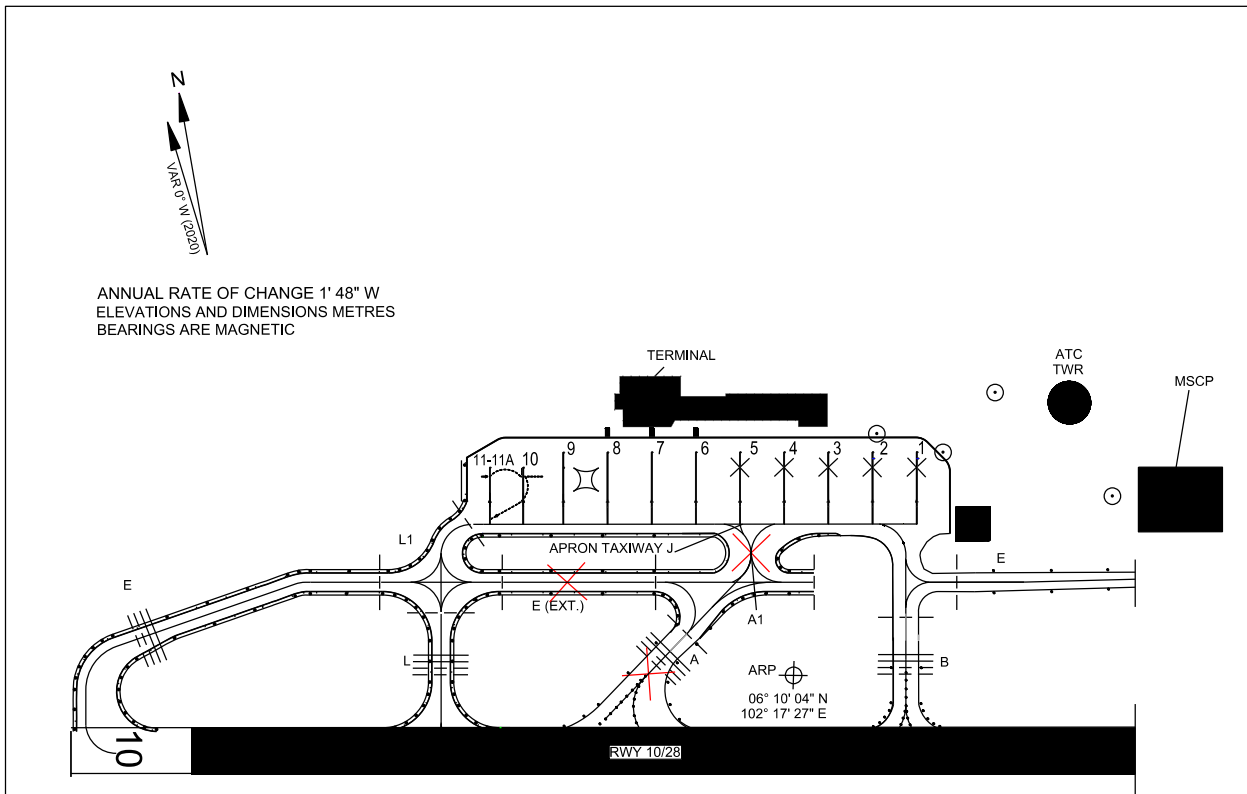
CHANGES : ADD INFO AT APRON (BAY 1 TO BAY 11-11A).
 ADD INFO ON NEW TAXIWAY E (EXT), APRON TAXIWAY J, TAXIWAY L & TAXIWAY L1
 ADD RUNWAY HOLDING POSITION MARKING AT TAXIWAY E (EXT.) AND TAXIWAY L
 CLOSED OPERATION FOR TAXIWAY A, TAXIWAY A1, TAXIWAY C & TAXIWAY E (EXT.)
 ADD INTERMEDIATE HOLDING POSITION MARKING AT TAXIWAY E (EXT.), TAXIWAY L, TAXIWAY L1, TAXIWAY A AND TAXIWAY B

**APPENDIX B
AIRCRAFT PARKING
DOCKING CHART - ICAO
PHASE 2A (FM 20240430 TIL 20241213 EST)**

APRON ELEV
5 M

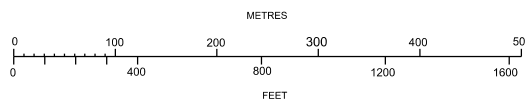
TWR	122.5
SMC	121.6
ATIS	120.85 (P)
	130.3 (S)
ATIS	128.85

**KOTA BHARU/SULTAN
ISMAL PETRA AIRPORT**



- TAXIWAY B 26 M WIDE
- TAXIWAY C 18 M WIDE
- TAXIWAY D 17 M WIDE
- TAXIWAY E 18 M WIDE
- TAXIWAY E (EXT) 18 M WIDE
- TAXIWAY F 14 M WIDE
- TAXIWAY G 21 M WIDE
- TAXIWAY H 13 M WIDE
- TAXIWAY L 18 M WIDE
- TAXIWAY L1 18 M WIDE
- APRON TAXIWAY J 18 M WIDE

- BEARING STRENGTH TAXIWAYS B, C, D, E, AND G PCR 520/F/D/X/U
- BEARING STRENGTH TAXIWAYS F & H 8.3 TONNES
- BEARING STRENGTH TAXIWAYS L, L1, E (EXT) PCR 650/F/B/X/T
- BEARING STRENGTH APRON TAXIWAY J PCR 660/R/B/W/T



AIRCRAFT PARKING/DOCKING STAND POSITION

INS COORDINATES FOR AIRCRAFT STANDS	SURFACE & STRENGTH	AIRCRAFT TYPE
6 6°10'11.79"N 102°17'26.76"E	PCR 660/R/B/W/T	A20N/A21N , B738/B739
7 6°10'12.03"N 102°17'25.36"E	PCR 660/R/B/W/T	A20N/A21N , B738/B739
8 6°10'12.27"N 102°17'23.97"E	PCR 660/R/B/W/T	A20N/A21N , B738/B739
9 6°10'12.50"N 102°17'22.57"E	PCR 660/R/B/W/T	A20N/A21N , B738/B739 , AT75/AT76
10 6°10'12.25"N 102°17'21.23"E	PCR 660/R/B/W/T	AT75/AT76
11 6°10'12.43"N 102°17'20.17"E	PCR 660/R/B/W/T	AT75/AT76
11A 6°10'11.95"N 102°17'21.09"E	PCR 660/R/B/W/T	B738/B739

LEGEND	
CONCRETE STRUCTURE	⊞
AIRCRAFT STAND	5
TAXIWAY LIGHT	●
RUNWAY-HOLDING POSITION	≡≡≡
INTERMEDIATE HOLDING POSITION	----
CLOSED MARKING	✗
AERODROME OBSTACLE (TOWER CRANE)	⊙

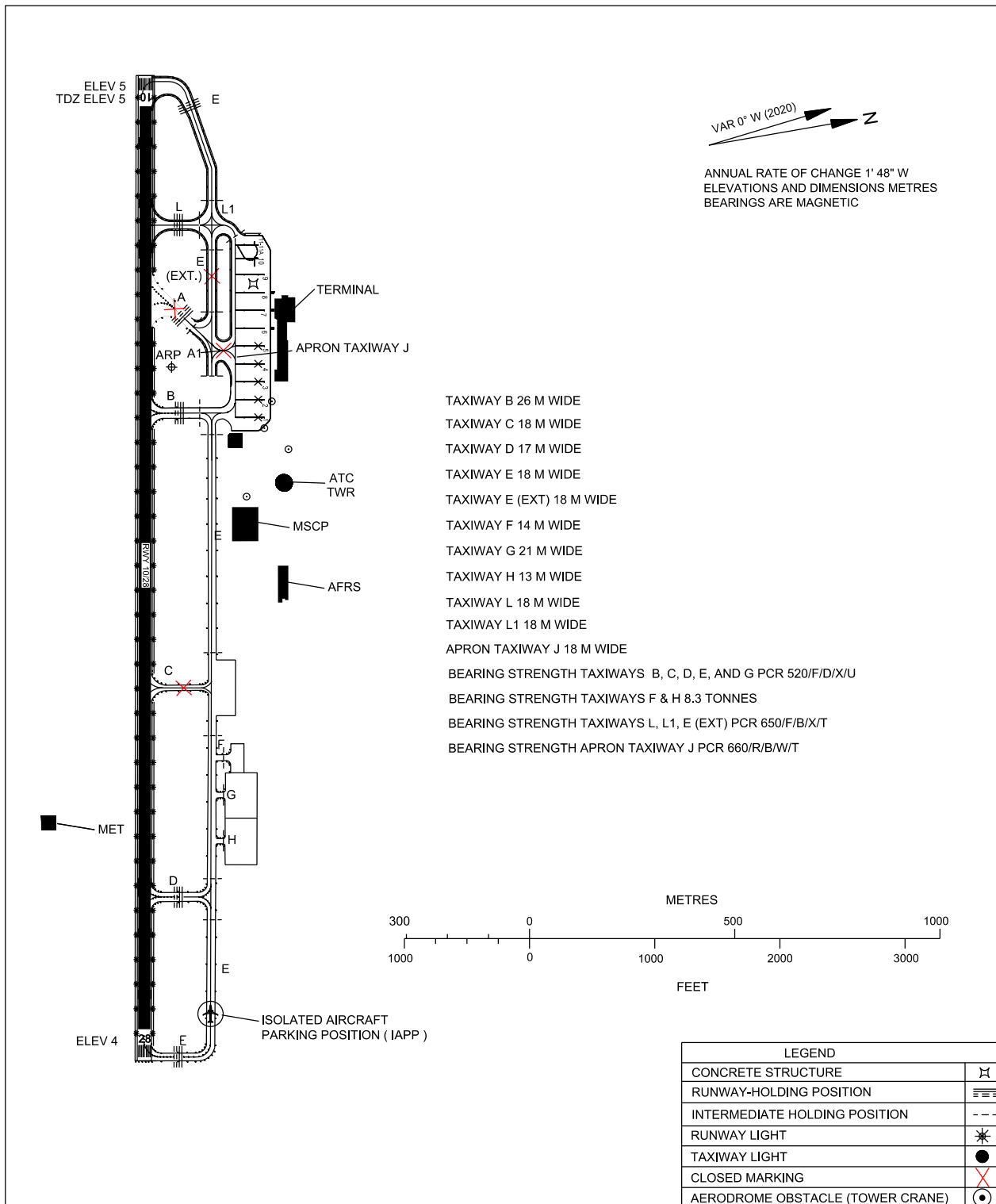
CHANGES: ADD INFO AT APRON (BAY 1 TO BAY 11-11A),
ADD INFO ON NEW TAXIWAY E (EXT), APRON TAXIWAY J, TAXIWAY L & TAXIWAY L1
CLOSED OPERATION FOR TAXIWAY A, TAXIWAY A1, TAXIWAY C & TAXIWAY E (EXT.)
ADD INTERMEDIATE HOLDING POSITION MARKING AT TAXIWAY E (EXT.), TAXIWAY L1, TAXIWAY A AND TAXIWAY B
ADD RUNWAY HOLDING POSITION MARKING AT TAXIWAY E (EXT.) AND TAXIWAY L

APPENDIX C
AERODROME GROUND
MOVEMENT CHART - ICAO
PHASE 2A (FM 20240430 TIL 20241213 EST)

APRON ELEV
5 M

TWR	122.5
SMC	121.6
ATIS	120.85 (P)
	130.3 (S)
ATIS	128.85

KOTA BHARU/SULTAN
ISMAIL PETRA AIRPORT



**APPENDIX D
AERODROME/HELIPORT
CHART - ICAO
PHASE 2B (FM 20241213 TIL 20250506 EST)**

06° 10' 04" N
102° 17' 27" E
ELEV 5 M

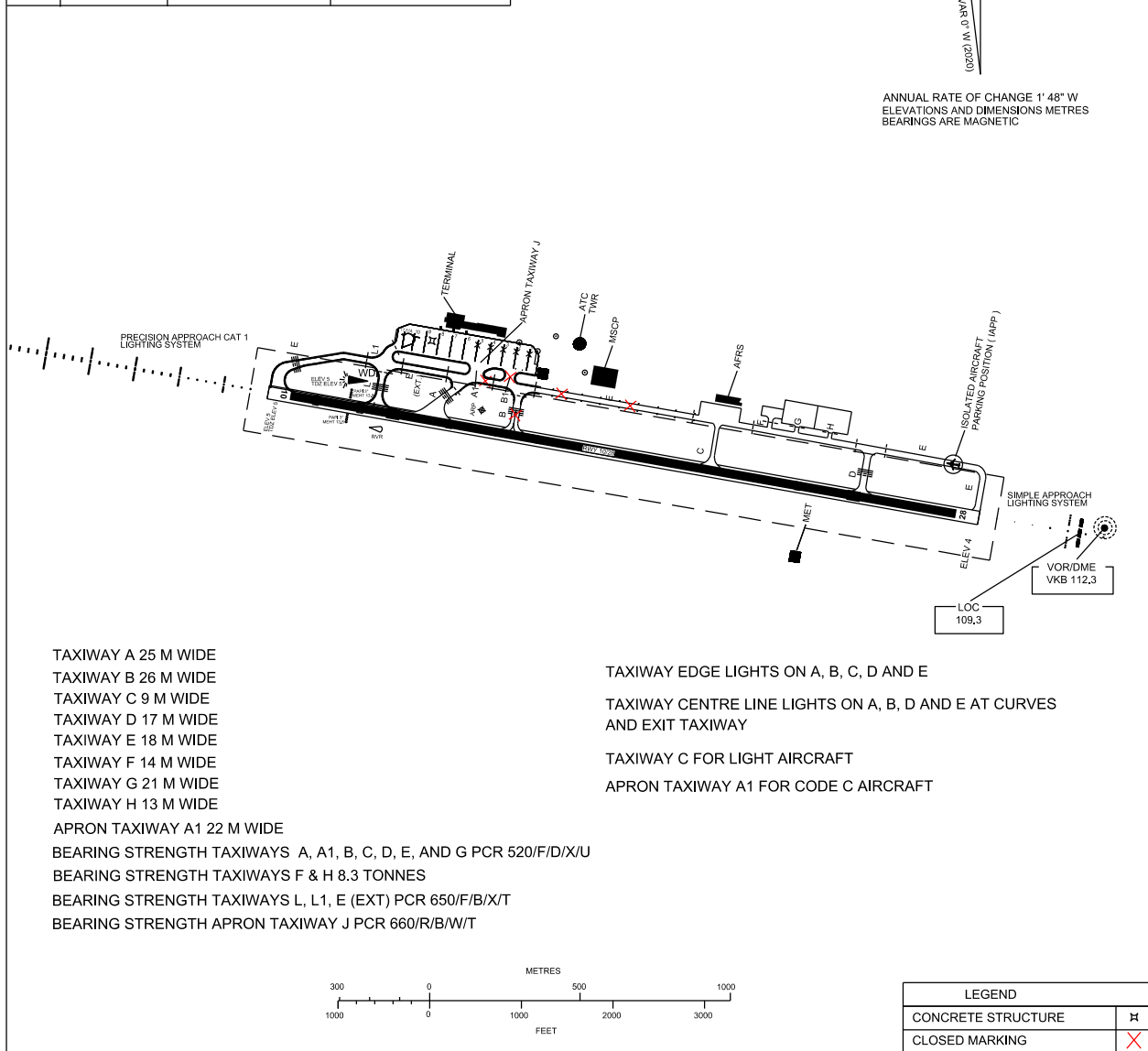
TWR	122.5
SMC	121.6
ATIS	120.85 (P)
	130.3 (S)
ATIS	128.85

**KOTA BHARU/SULTAN
ISMAL PETRA AIRPORT**

RWY	DIRECTION	THR	BEARING STRENGTH
10	099° T	06° 10' 05.71" N 102° 17' 05.52" E	PCR 520/F/D/X/U ASPHALT
28	279° T	06° 09' 52.61" N 102° 18' 22.48" E	

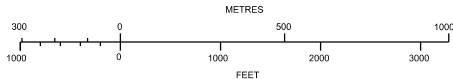


ANNUAL RATE OF CHANGE 1' 48" W
ELEVATIONS AND DIMENSIONS METRES
BEARINGS ARE MAGNETIC



TAXIWAY A 25 M WIDE
TAXIWAY B 26 M WIDE
TAXIWAY C 9 M WIDE
TAXIWAY D 17 M WIDE
TAXIWAY E 18 M WIDE
TAXIWAY F 14 M WIDE
TAXIWAY G 21 M WIDE
TAXIWAY H 13 M WIDE
APRON TAXIWAY A1 22 M WIDE
BEARING STRENGTH TAXIWAYS A, A1, B, C, D, E, AND G PCR 520/F/D/X/U
BEARING STRENGTH TAXIWAYS F & H 8.3 TONNES
BEARING STRENGTH TAXIWAYS L, L1, E (EXT) PCR 650/F/B/X/T
BEARING STRENGTH APRON TAXIWAY J PCR 660/R/B/W/T

TAXIWAY EDGE LIGHTS ON A, B, C, D AND E
TAXIWAY CENTRE LINE LIGHTS ON A, B, D AND E AT CURVES
AND EXIT TAXIWAY
TAXIWAY C FOR LIGHT AIRCRAFT
APRON TAXIWAY A1 FOR CODE C AIRCRAFT



LEGEND	
CONCRETE STRUCTURE	⊞
CLOSED MARKING	⊞

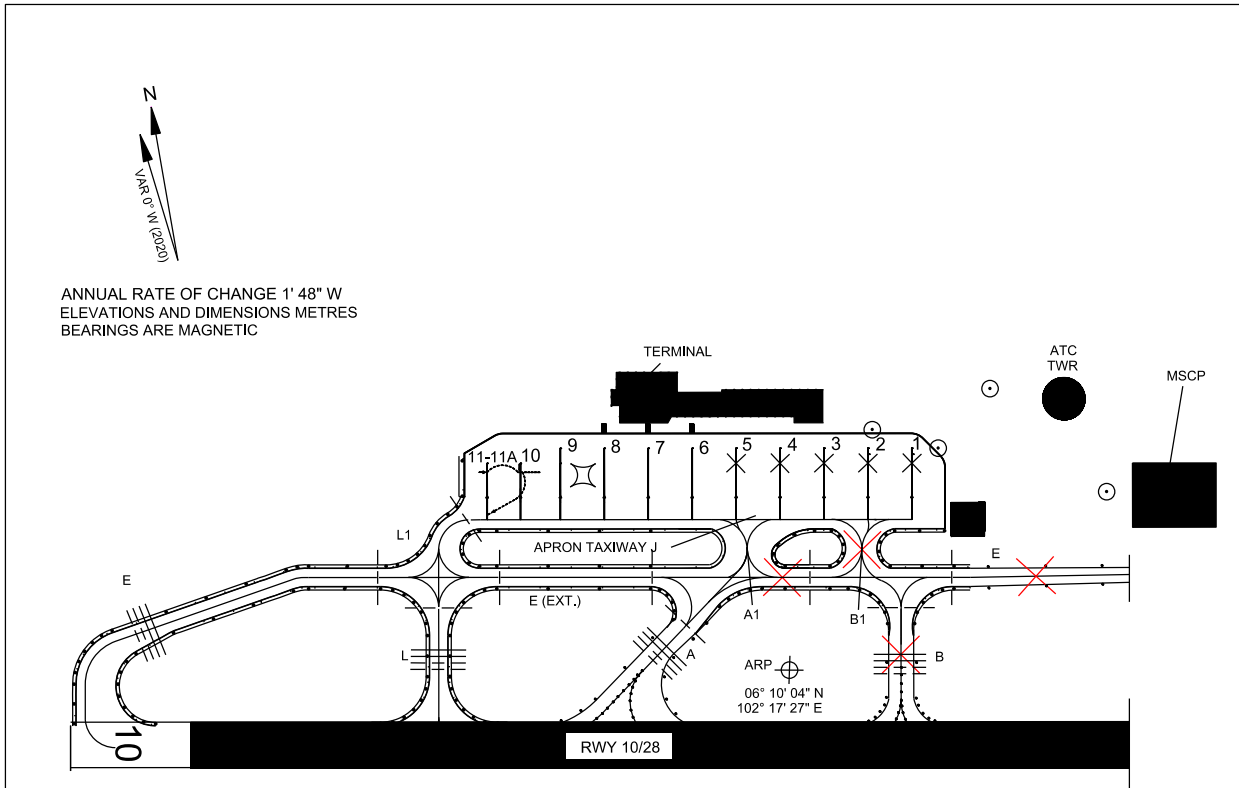
CHANGES : ADD INFO AT APRON (BAY 1 TO BAY 11-11A),
ADD INFO ON NEW TAXIWAY E (EXT), APRON TAXIWAY J, TAXIWAY L & TAXIWAY L1
CLOSED OPERATION FOR TAXIWAY A, TAXIWAY A1, TAXIWAY C & TAXIWAY E (EXT.)
ADD INTERMEDIATE HOLDING POSITION MARKING AT TAXIWAY E (EXT.), TAXIWAY L, TAXIWAY L1, TAXIWAY A AND TAXIWAY B
ADD RUNWAY HOLDING POSITION MARKING AT TAXIWAY E (EXT.) AND TAXIWAY L

**APPENDIX E
AIRCRAFT PARKING
DOCKING CHART - ICAO
PHASE 2B (FM 20241213 TIL 20250506 EST)**

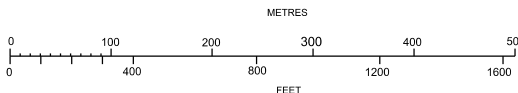
APRON ELEV
5 M

TWR	122.5
SMC	121.6
ATIS	120.85 (P)
	130.3 (S)
ATIS	128.85

**KOTA BHARU/SULTAN
ISMAIL PETRA AIRPORT**



- | | |
|---------------------------|---|
| TAXIWAY A 25 M WIDE | BEARING STRENGTH TAXIWAYS A1, B, C, D, E, AND G PCR 520/F/D/X/U |
| TAXIWAY C 18 M WIDE | BEARING STRENGTH TAXIWAYS F & H 8.3 TONNES |
| TAXIWAY A1 18 M WIDE | BEARING STRENGTH TAXIWAYS L, L1, E (EXT) PCR 650/F/B/X/T |
| TAXIWAY D 17 M WIDE | BEARING STRENGTH APRON TAXIWAY J PCR 660/R/B/W/T |
| TAXIWAY E 18 M WIDE | |
| TAXIWAY E (EXT) 18 M WIDE | |
| TAXIWAY F 14 M WIDE | |
| TAXIWAY G 21 M WIDE | |
| TAXIWAY H 13 M WIDE | |
| TAXIWAY L 18 M WIDE | |
| TAXIWAY L1 18 M WIDE | |
| APRON TAXIWAY J 18 M WIDE | |



AIRCRAFT PARKING/DOCKING STAND POSITION

INS COORDINATES FOR AIRCRAFT STANDS	SURFACE & STRENGTH	AIRCRAFT TYPE
6 6°10'11.79"N 102°17'26.76"E	PCR 660/R/B/W/T	A20N/A21N , B738/B739
7 6°10'12.03"N 102°17'25.36"E	PCR 660/R/B/W/T	A20N/A21N , B738/B739
8 6°10'12.27"N 102°17'23.97"E	PCR 660/R/B/W/T	A20N/A21N , B738/B739
9 6°10'12.50"N 102°17'22.57"E	PCR 660/R/B/W/T	A20N/A21N , B738/B739 , AT75/AT76
10 6°10'12.25"N 102°17'21.23"E	PCR 660/R/B/W/T	AT75/AT76
11 6°10'12.43"N 102°17'20.17"E	PCR 660/R/B/W/T	AT75/AT76
11A 6°10'11.95"N 102°17'21.09"E	PCR 660/R/B/W/T	B738/B739

LEGEND	
CONCRETE STRUCTURE	⊎
AIRCRAFT STAND	5
TAXIWAY LIGHT	●
RUNWAY-HOLDING POSITION	≡≡≡
INTERMEDIATE HOLDING POSITION	----
CLOSED MARKING	×
AERODROME OBSTACLE (TOWER CRANE)	⊙

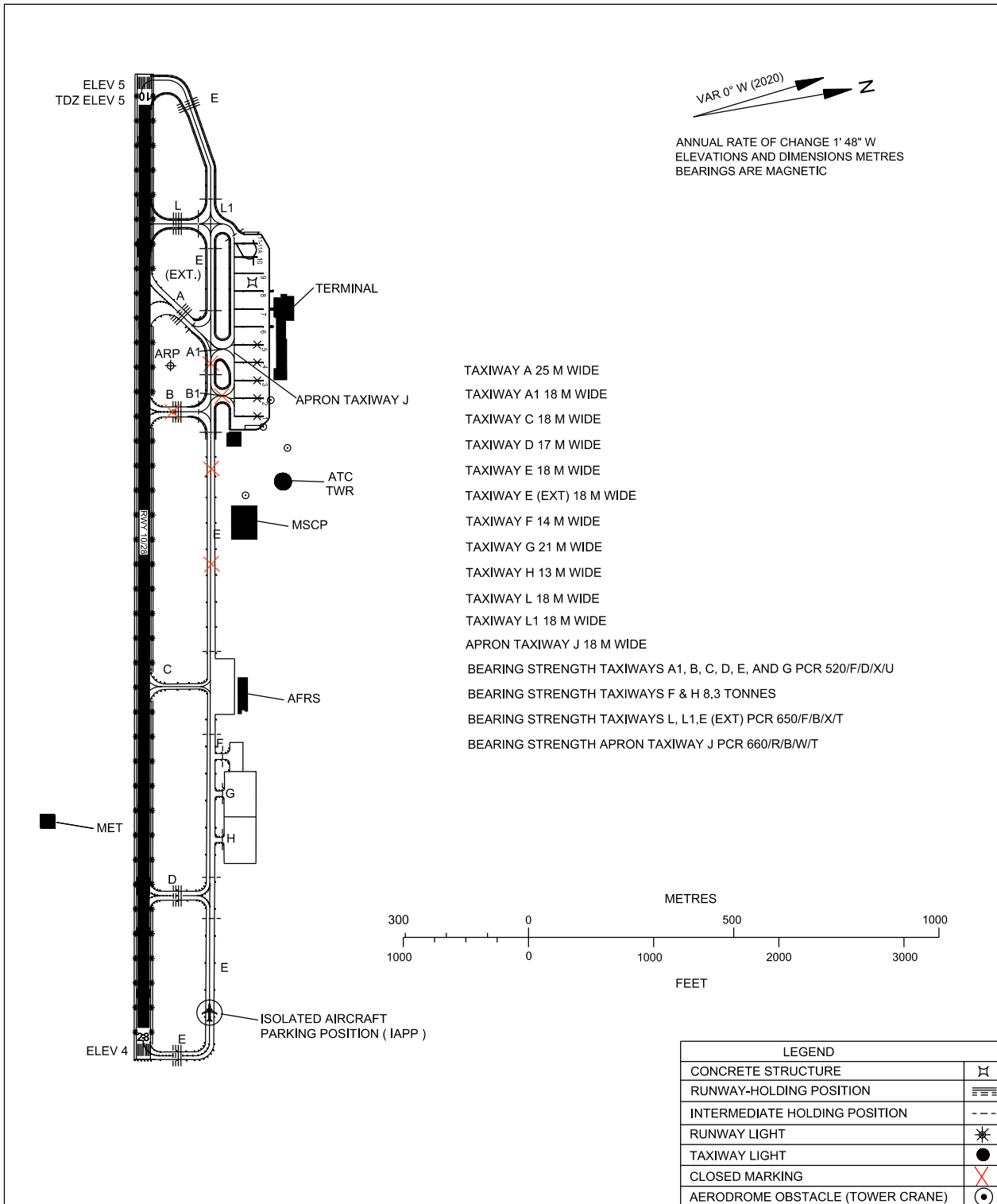
CHANGES : ADD INFO AT APRON (BAY 1 TO BAY 11-11A),
ADD INFO ON NEW TAXIWAY E (EXT), APRON TAXIWAY J, TAXIWAY L & TAXIWAY L1
CLOSED OPERATION FOR TAXIWAY A, TAXIWAY A1, TAXIWAY C & TAXIWAY E (EXT.)
ADD INTERMEDIATE HOLDING POSITION MARKING AT TAXIWAY E (EXT.), TAXIWAY L, TAXIWAY L1, TAXIWAY A AND TAXIWAY B
ADD RUNWAY HOLDING POSITION MARKING AT TAXIWAY E (EXT.) AND TAXIWAY L

APPENDIX F
AERODROME GROUND
MOVEMENT CHART - ICAO
PHASE 2B (FM 20241213 TIL 20250506 EST)

APRON ELEV
5 M

TWR	122.5
SMC	121.6
ATIS	120.85 (P)
	130.3 (S)
ATIS	128.85

KOTA BHARU/SULTAN
ISMAIL PETRA AIRPORT



CHANGES : ADD INFO AT APRON (BAY 1 TO BAY 11-11A).
 ADD INFO ON NEW TAXIWAY E (EXT), APRON TAXIWAY J, TAXIWAY L & TAXIWAY L1
 CLOSED OPERATION FOR TAXIWAY A, TAXIWAY A1, TAXIWAY C & TAXIWAY E (EXT.)
 ADD INTERMEDIATE HOLDING POSITION MARKING AT TAXIWAY E (EXT.), TAXIWAY L, TAXIWAY L1, TAXIWAY A AND TAXIWAY B
 ADD RUNWAY HOLDING POSITION MARKING AT TAXIWAY E (EXT.) AND TAXIWAY L